

SHAWVER GROUP

SHAWVERGROUP.COM



RETAIL SPACE AVAILABLE

2121 SW Wanamaker Rd, Topeka, KS 66614

SHAWVER
GROUP
COMMERCIAL REAL ESTATE

Joanna B. Shawver
joanna@shawvergroup.com 816.213.9578
Chance Barrow
chance@shawvergroup.com 816.337.5088

Disclaimer: All marketing information is deemed reliable but its accuracy is not guaranteed. Neither listing broker(s) or information provider(s) shall be responsible for typographical errors, misinformation, misprints and shall be held totally harmless. Listing information is provided for consumers, personal, non-commercial use and may not be used for any purpose other than to identify prospective tenants who may be interested in leasing or purchasing the property. Any reliance on this information is solely at your own risk.

LOCATION

2121 SW Wanamaker Rd
Topeka, KS 66614

AVAILABLE

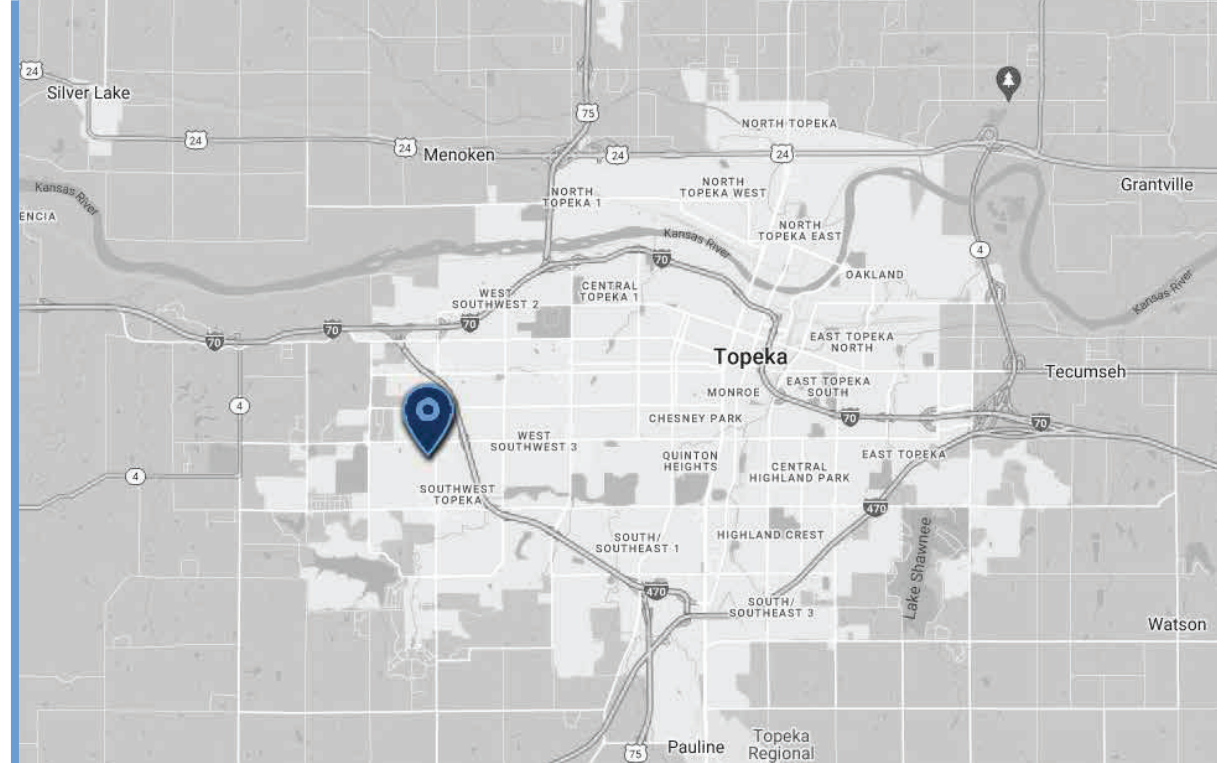
±1,200 SF End Cap Space (Leased)
±2,190 SF 2nd Gen Restaurant Space
(Leased)
±2,160 SF Turnkey Dental Office Space

RATES

Available Upon Request

TRAFFIC COUNTS

21,010 VPD 21st St
15,330 VPD Wanamaker Rd



DEMOGRAPHICS

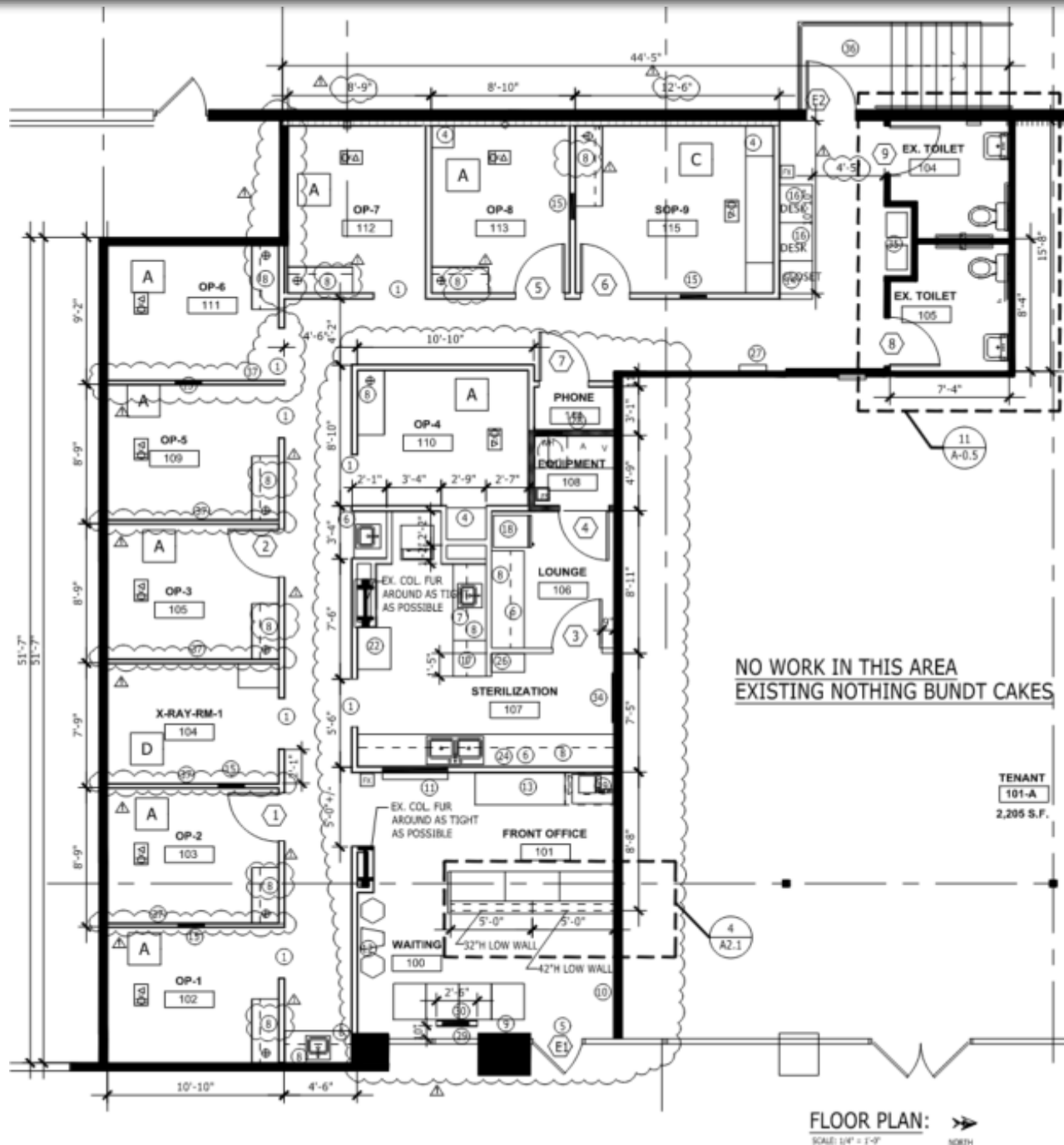
	2022 Population	Total Households	Median HH Income
1 mile	9,033	4,241	\$65,559
3 miles	54,986	25,197	\$67,447
5 miles	94,705	41,836	\$60,336

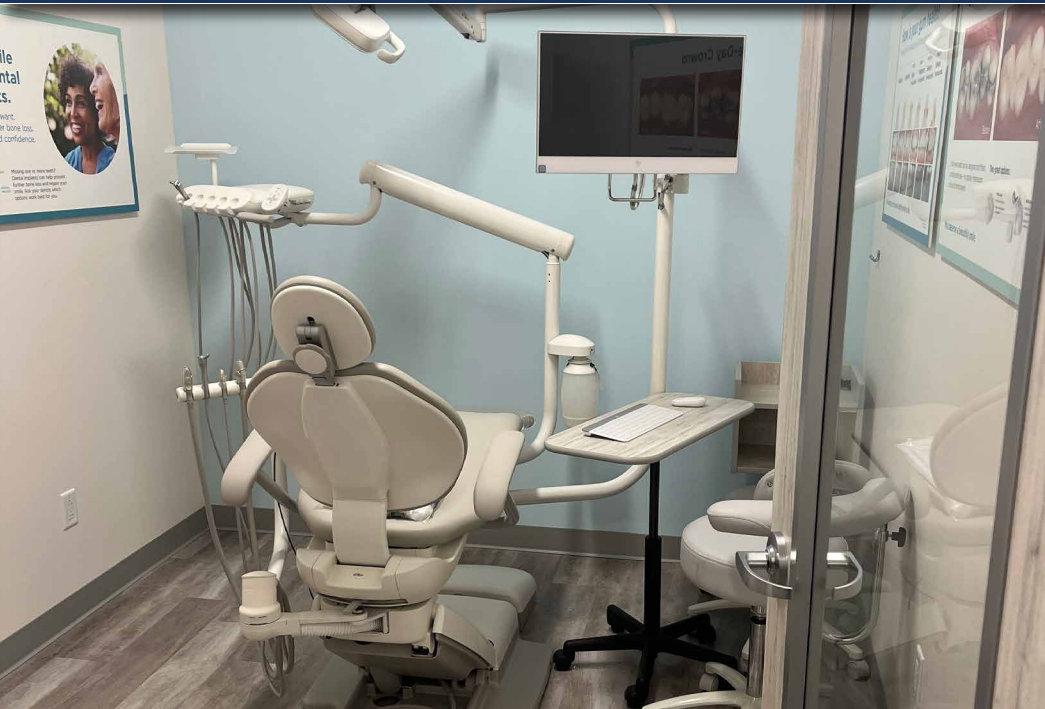
PROPERTY HIGHLIGHTS

- Located at a high-traffic intersection
- Good visibility along Wanamaker Rd
- Monument sign available
- Access points on both Wanamaker Rd & 21st St
- Dental office space has brand new equipment available for purchase

2121 SW Wanamaker Road, Topeka, KS 66614







CLOSE AERIAL

2121 SW Wanamaker Rd, Topeka, KS

Joanna B. Shawver
joanna@shawvergroup.com
816.213.9578

Chance Barrow
chance@shawvergroup.com
816.337.5088



WIDE AERIAL

2121 SW Wanamaker Rd, Topeka, KS

Joanna B. Shawver
joanna@shawvergroup.com
816.213.9578

Chance Barrow
chance@shawvergroup.com
816.337.5088



*Source: Kalibrate traffic counts, otherwise DOT